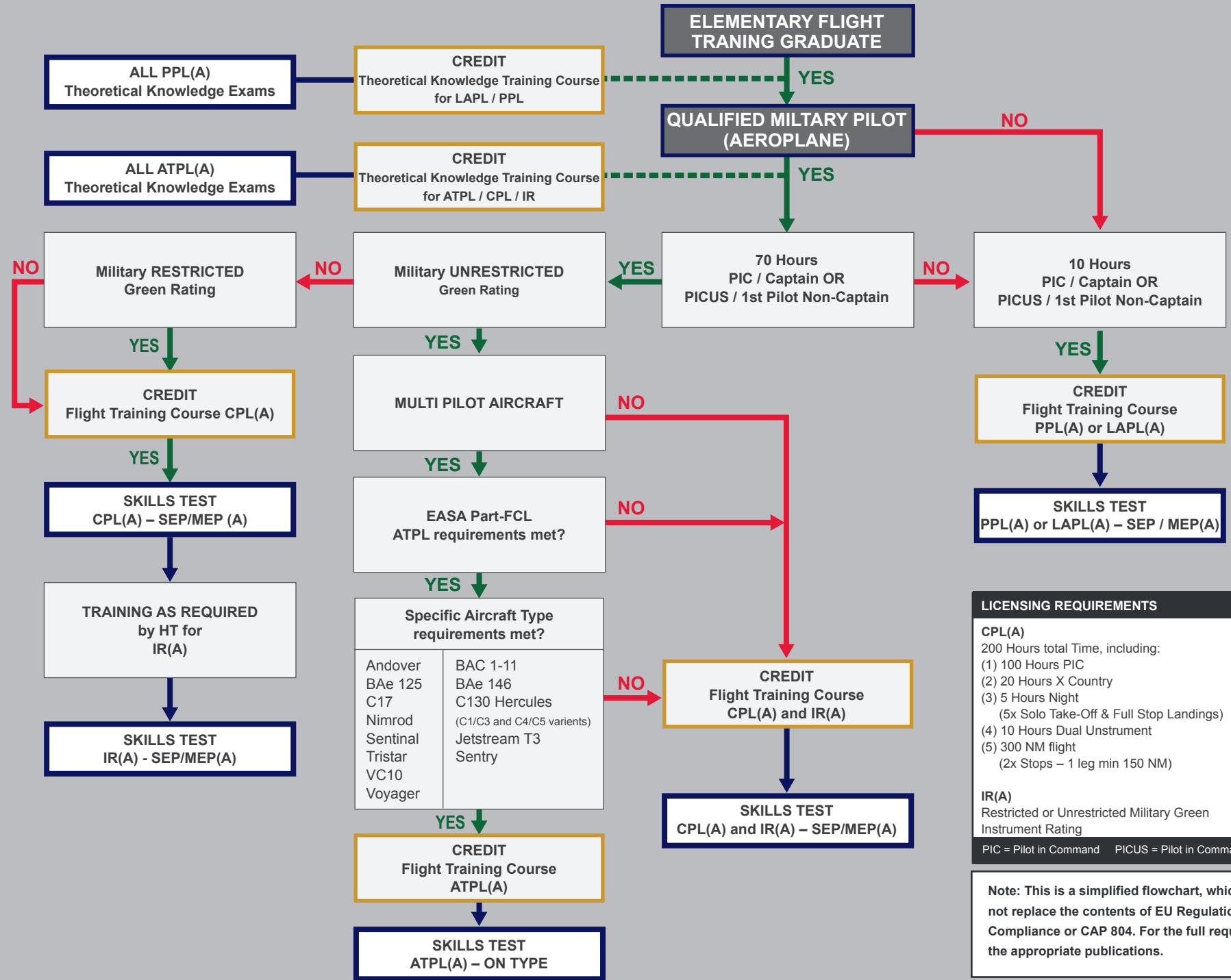


QUALIFIED MILITARY PILOT (AEROPLANE) ACCREDITATION SCHEME



LICENSING REQUIREMENTS	
CPL(A) 200 Hours total Time, including: (1) 100 Hours PIC (2) 20 Hours X Country (3) 5 Hours Night (5x Solo Take-Off & Full Stop Landings) (4) 10 Hours Dual Uninstrument (5) 300 NM flight (2x Stops – 1 leg min 150 NM)	ATPL(A) 1500 Hours Total Time, including: (1) 500 Hours MPA (2) 500 Hours PICUS, or 250 hrs PIC, or 250 hrs (70 hrs PIC / 180 hrs PICUS) (3) 200 hrs X-Country (100 hrs PIC/PICUS) (4) 75 hrs Instrument Flight (30 hrs ground max.) (5) 100 hrs Night (PIC/Co-Pilot)
IR(A) Restricted or Unrestricted Military Green Instrument Rating	
PIC = Pilot in Command PICUS = Pilot in Command Under Supervision MPA = Multi Pilot Aircraft	

Note: This is a simplified flowchart, which is only designed to supplement and not replace the contents of EU Regulation 1178/2011, the Acceptable Means of Compliance or CAP 804. For the full requirements, reference should be made to the appropriate publications.